



CROWN PAVILIONS

Contemporary Collection

The World's Finest
Garden Rooms™

The marque of excellence

Welcome

...to the modern world, where houses are getting smaller and space is at a premium. We recognise that, wherever you live, many of you are looking for ways to create extra space without the upheaval of moving or renovating your existing property. Introducing a new generation of garden rooms – ideal for a home office, yoga studio or man cave – a one-stop solution that provides you with additional, flexible space. These collections comprise high-quality, contemporary garden buildings, thoughtfully designed to complement your outdoor environment and enhance your garden space.

Time to make your dream a reality?

Why Crown?

When you commission a garden room from Crown Pavilions, you will be taking ownership of a timber structure that's been hand-built in England, a building which over-delivers on quality and workmanship both inside and out.

The Contemporary Collection is fully insulated and triple glazed, now featuring smart air conditioning as standard, with pre-installed internal electrics, offering a comfortable and functional garden building for year-round use. Yet, unlike a traditional extension, there is minimal disruption and planning permission is not usually required.

When it comes to creating the world's finest garden rooms, Crown Pavilions is the undisputed market leader. The Crown Marque of Excellence also ensures that your new garden room will remain the admired focal point of your garden for many years to come, a fabulous space that will impress your guests as you welcome them into your garden retreat.

Marque of Excellence



Crown garden rooms are acknowledged across the globe as the world's finest outdoor living spaces, hand-built in Oxfordshire by award-winning craftsmen.

Delivery* & Installation



Installation is included in the price. Delivery is free within 100 miles of our Oxfordshire workshops.

Guaranteed up to 10 Years



For your complete peace of mind, Crown garden rooms are fully guaranteed against timber decay or compromise of structural integrity.

Premium Features



Roof upgraded to a timber framed structure with premium insulation and with waterproof EPDM rubber for a completely seamless and watertight finish.

Electricity



Electricity can be quoted for and taken care of for a seamless project from start to finish. All electrics are pre-wired into an internal consumer unit, ready for final mains connection.

Year-Round Enjoyment



Our garden rooms are designed to provide a comfortable and versatile outdoor space across the seasons, suitable for a range of uses throughout the year.

Planning Permission



Planning permission is not normally required, as this range is designed to fall within permitted development. Your new garden room will be built on site, typically within a few days (plus one day for ground screw foundations)

Bringing your home and garden together

The NEW Contemporary Collection will enhance any outdoor space. With best-in-class features and our 20 years of garden room building experience, this collection has it all. Featuring striking modern cladding finishes, with coordinated window and door specifications throughout, along with your preferred flooring finish.

Peace-of-mind also comes as standard, with our 10-year structural guarantee and over 300 five-star Trustpilot reviews.

What's included as standard?

- External cladding finishes include Weathered Grey, Walnut, and Charred Black.
- Triple-glazed aluminium windows and doors in anthracite grey with black handles, now included as standard.
- Smart Air Conditioning is now included as standard, providing intelligent climate control for year-round comfort.
- Window and door positions are fixed as standard.
- Double-skinned roof with steel, fully insulated with 100mm Rockwool.
- Roof upgraded to a timber-framed, fully insulated system, finished with premium EPDM.
- Double-skinned walls, fully insulated with 70mm membrane-backed Rockwool.
- Walls are constructed from 3" x 2" solid timber studs. With finishes, this provides 5.2" (134mm) insulated walls.
- Fully insulated floor with 90mm Celotex, helping to maintain a comfortable and refined internal environment.
- Premium-grade internal SPC (Stone Plastic Composite) flooring available in Natural Oak, Walnut, and Grey Oak finishes.
- Solid white melamine walls and ceiling are included as standard, used for longevity and easy cleaning.

Main Garden Room (Electrics)

- 1 x consumer unit (1 x 63A RCD with 1 x 6A and 1 x 16A circuits)
Sockets and switches (white)
- Track lighting (3 x 50W GU10) – now dimmable as standard.
- Lighting includes 2 external dimmable up/down wall lights - Black

Please note: all electrics are terminated in an internal consumer unit, ready for mains connection which is not included.

Doors and windows are supplied in anthracite grey aluminium, triple glazed with black handles.

Installation included within 100 miles of our Oxfordshire workshops. (Additional charges apply for London area installations to cover parking and congestion costs)

Specification

All images in this brochure are indicative of models and design features at time of photography. Crown Pavilions products may vary due to ongoing design enhancements, improvements and modifications.

The plan dimensions shown in this brochure are not intended to be sufficient for fitting carpets, tiles, furniture etc. Please refer to your final order and drawings for the exact specification relating to your garden room.

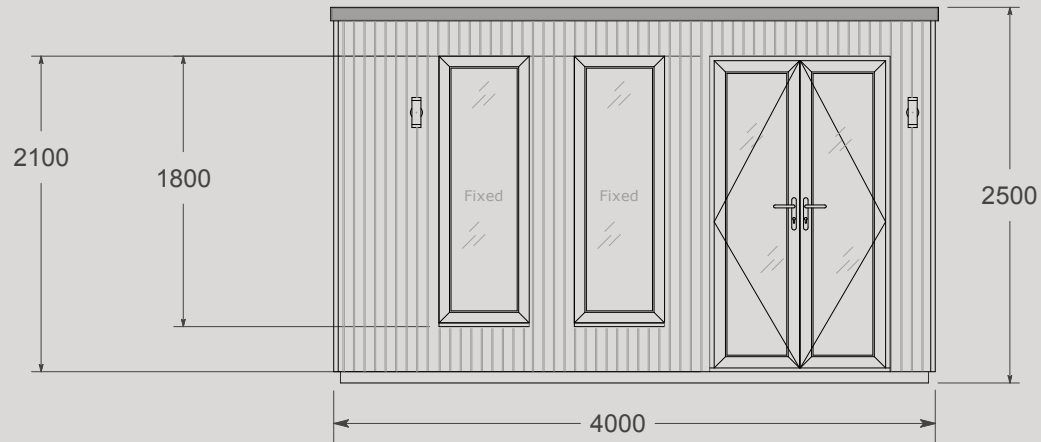
Contemporary Collection (4m x3m)

Shown finished in anthracite grey aluminium,
with triple glazing and black handles.

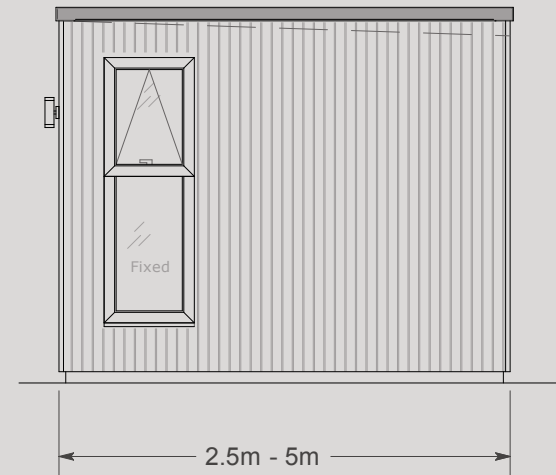


CROWN PAVILIONS

The dimensions: (4m x 3m)



Front Elevation

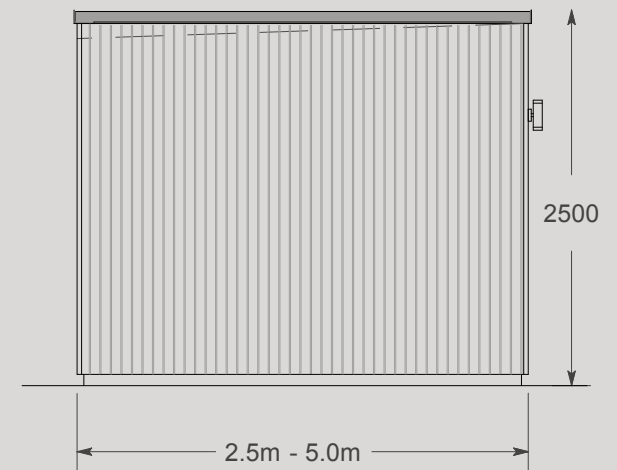


Right Elevation



4m x 3m

External cladding finishes include Weathered Grey, Walnut, and Charred Black.



Left Elevation

Contemporary Collection (5m x 4m)

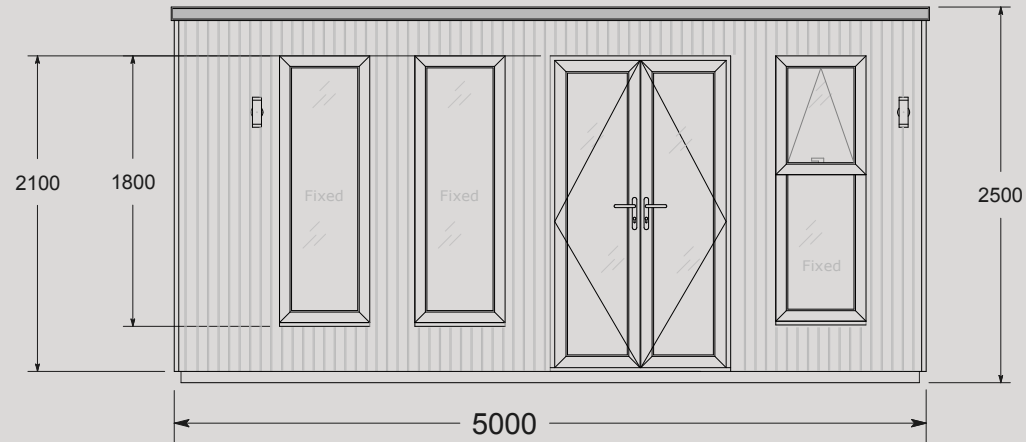


Shown finished in anthracite grey aluminium,
with triple glazing and black handles.

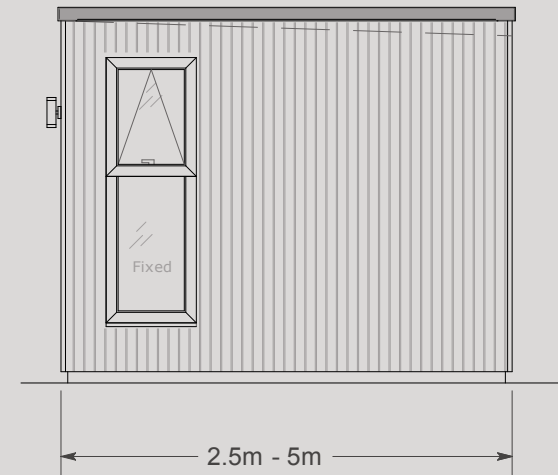


CROWN PAVILIONS

The dimensions: (5m x 4m)



Front Elevation

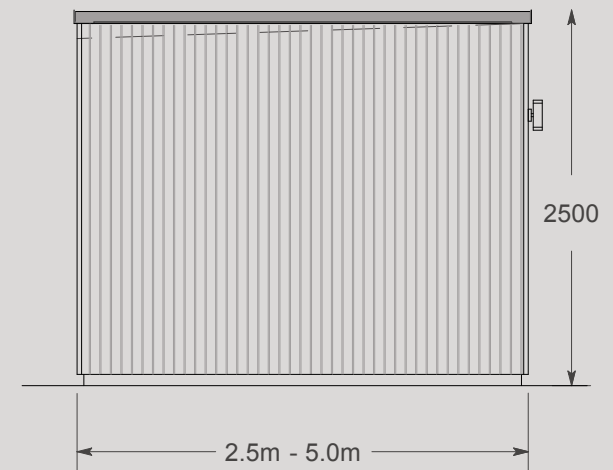


Right Elevation



5m x 4m

External cladding finishes include Weathered Grey, Walnut, and Charred Black. Corner window is included as standard.



Left Elevation

Contemporary Collection (6m x 5m)

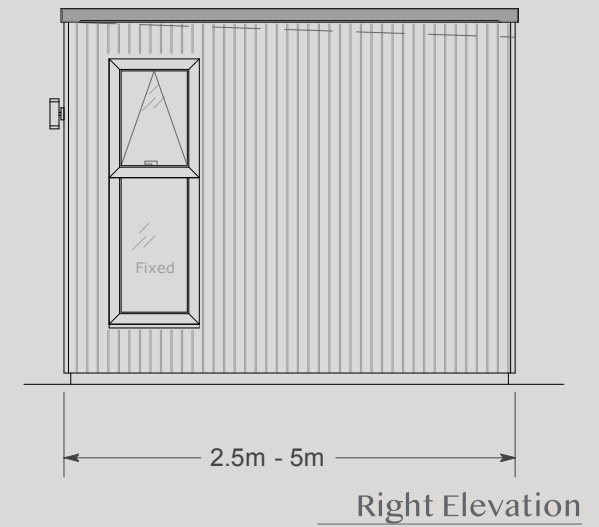
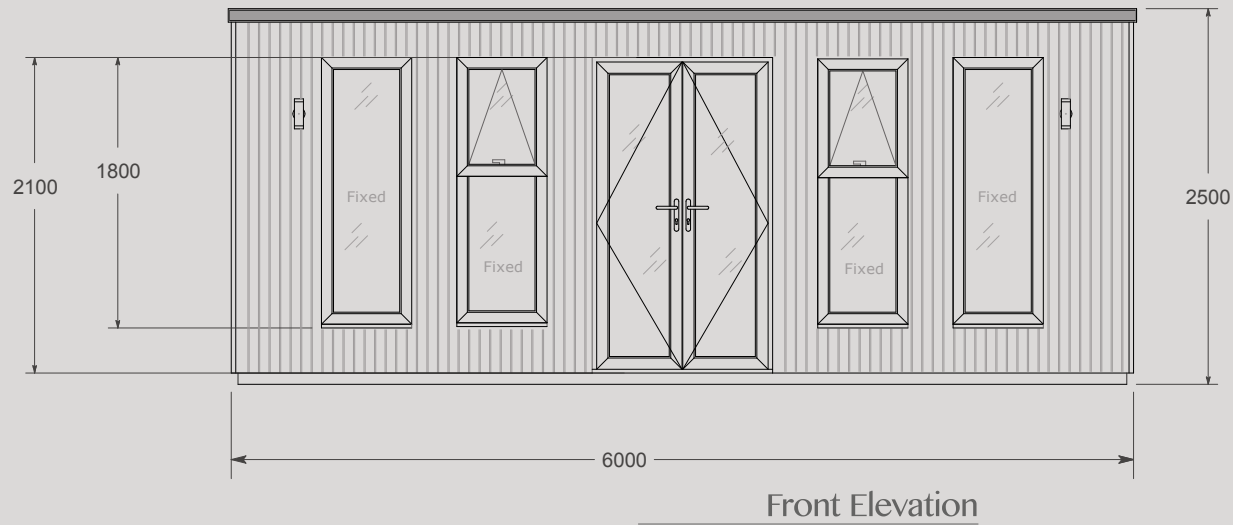


Shown finished in anthracite grey aluminium,
with triple glazing and black handles.



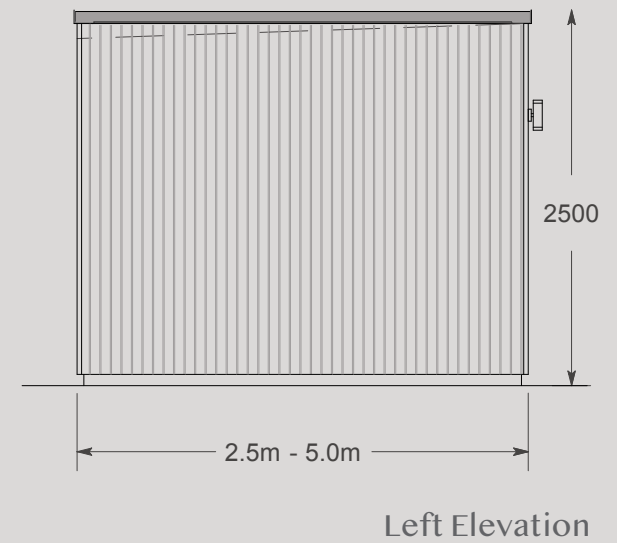
CROWN PAVILIONS

The dimensions: (6m x 5m)



6m x 5m

External cladding finishes include Weathered Grey, Walnut, and Charred Black.
Corner window is included as standard.



Contemporary Collection (10m x 3m)

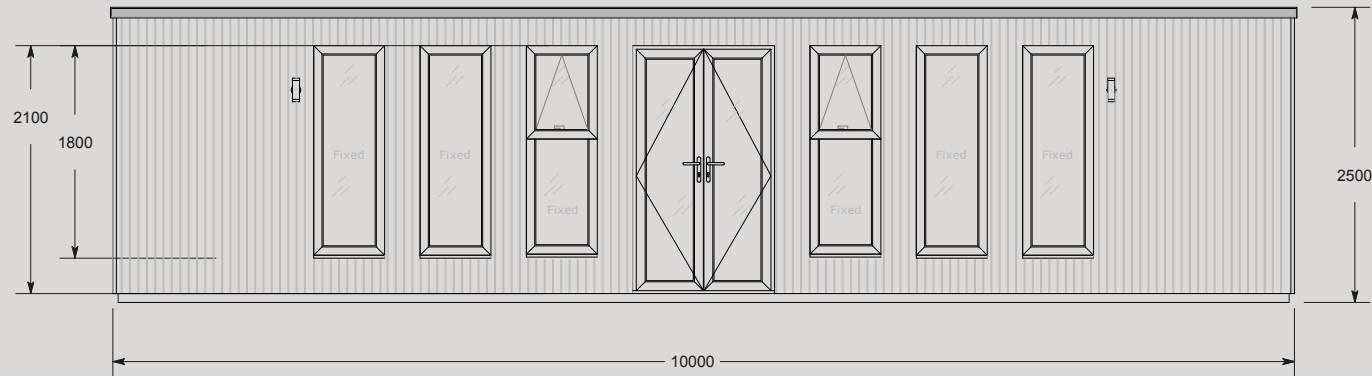


Shown finished in anthracite grey aluminium,
with triple glazing and black handles.

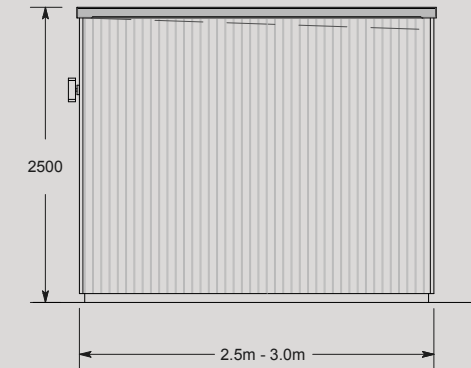


CROWN PAVILIONS

The dimensions: (10m x 3m)



Front Elevation

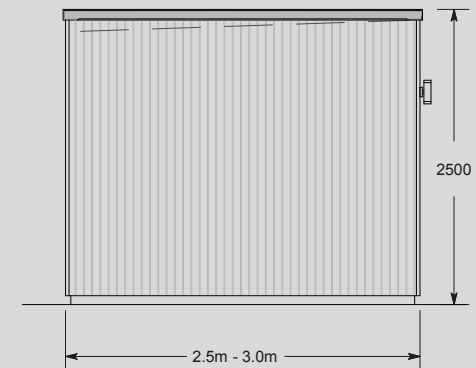


Right Elevation



10m x 3m

External cladding finishes include Weathered Grey, Walnut, and Charred Black.
Corner window is included as standard.



Left Elevation

Contemporary Garden Room Pricing

Sizing Options

		WIDTH (M)															
		2.5	3	3.5	4	4.5	5	5.5	6	6.5	7	7.5	8	8.5	9	9.5	10
DEPTH (M)	2.5	N/A	£ 17,490	£ 18,510	£ 19,230	£ 20,270	£ 20,990	£ 22,010	£ 23,050	£ 24,080	£ 25,120	£ 26,770	£ 28,320	£ 29,360	£ 30,080	£ 31,110	£ 32,140
	3	£ 17,490	£ 21,940	£ 22,950	£ 24,170	£ 25,180	£ 26,180	£ 27,510	£ 28,510	£ 30,150	£ 31,370	£ 33,320	£ 35,470	£ 36,490	£ 37,490	£ 38,710	£ 40,340
	3.5	£ 18,510	£ 22,640	£ 23,940	£ 24,920	£ 26,110	£ 27,730	£ 29,030	£ 30,220	£ 32,140	£ 33,970	£ 35,790	£ 37,610	£ 39,530	N/A	N/A	N/A
	4	£ 19,230	£ 23,640	£ 24,600	£ 25,880	£ 27,360	£ 28,950	£ 30,440	£ 31,710	£ 34,140	£ 36,460	£ 38,880	N/A	N/A	N/A	N/A	N/A
	4.5	£ 21,340	£ 25,960	£ 27,490	£ 29,140	£ 31,670	£ 34,420	£ 36,060	£ 37,600	£ 40,140	N/A	N/A	N/A	N/A	N/A	N/A	N/A
	5	£ 20,990	£ 25,970	£ 27,730	£ 29,470	£ 32,690	£ 36,220	£ 37,970	£ 39,720	N/A	N/A	N/A	N/A	N/A	N/A	N/A	N/A

Panel Heater

All garden rooms include 1 x electric panel heater (size dependent on the building chosen), finished in white. Alternatively, customers may opt for a Smart Air Conditioner instead. Additional heaters can be purchased as specified below.

	Size	Heated Space	Price
400w	370 x 486 x 84	6m ²	£280
600w	370 x 589 x 84	7.5m ²	£290
800w	370 x 704 x 84	10m ²	£300
1000w	370 x 762 x 84	12.5m ²	£310
1200w	370 x 934 x 84	15m ²	£330
1400w	370 x 1049 x 84	17.5m ²	£350
2000w	370 x 1394 x 84	20m ²	£380

Finance offers available.
Please contact us
for further details.

Base for your garden room

We can undertake a ground condition assessment to confirm site suitability for your chosen location. This assessment is required and charged at **£460** as an additional cost.

Heating

Electric wall panel heaters are available in white:

400w	size 370x486x84	Heated space for 6m ²
600w	size 370x589x84	Heated space 7.5m ²
800w	size 370x704x84	Heated space 10m ²
1000w	size 370x762x84	Heated space 12.5m ²
1200w	size 370x934x84	Heated space 15m ²
1400w	size 370x1049x84	Heated space 17.5m ²
2000w	size 370x1394x84	Heated space 20m ²

Flooring

Natural Oak



Walnut



Grey Oak



Delivery & Installation

Professional installation of your Crown Pavilions garden room is included free of charge. Free delivery is also included within a 100 mile radius of our Oxfordshire workshops. For locations further afield a surcharge will apply for mileage and possible overnight accommodation for our installers depending on distance.

Please note there is also a surcharge for London area installations to cover parking and congestion charges.

Optional Free Upgrades (Internal wall & ceiling finishes)

White melamine (Included as Standard)

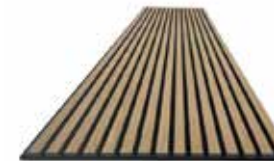
Walls & Ceilings (internal): White melamine

Acoustic Panelling

Walls & Ceilings: Acoustic panelling (Maple veneer) or
Walls Acoustic panelling & Ceilings in White melamine



Walls & Ceilings: Acoustic panelling (Teak veneer) or
Walls Acoustic panelling & Ceilings in White melamine



White Wash Redwood

Walls & Ceilings (internal): White wash redwood cladding



Smart Air Conditioner

This wall-mounted all-in-one model, finished in white, is a great performer for year-round use as it works as a powerful air conditioner in the summer and a cost-effective heater in the winter. It functions as a dehumidifier too, which is great for keeping damp and moisture at bay. Customers can choose this option instead of the standard electric panel heater.

10,000 BTU

- 10,000 BTU cooling and heating for large rooms up to 30 sqm (320 sqft)
- 3-in-1: Cool | Heat | Dehumidify
- All-in-one - No outdoor unit is required, this AC is neatly vented through the wall
- Slimline Design - Thinnest air conditioner on the market at just 20cm deep
- Smart - Control from your phone or home assistant. Smart scheduling saves energy
- Quietest all-in-one air conditioner - 58dB
- 24-hr timer to pre-cool rooms and turn off during the night. Scheduling saves money

12,000 BTU

- 12,000 BTU cooling and heating for large rooms up to 35 sqm (377 sqft)
- 3-in-1: Cool | Heat | Dehumidify
- All-in-one - No outdoor unit is required, this AC is neatly vented through the wall
- Slimline Design - Thinnest air conditioner on the market at just 20cm deep
- Smart - Control from your phone or home assistant. Smart scheduling saves energy
- Quietest all-in-one air conditioner - 61dB
- 24-hr timer to pre-cool rooms and turn off during the night. Scheduling saves money



Great for areas up to 35m²



Cooling & Heating



Alexa and Google Home enabled



24 hour timer



Triple Glazing

Triple glazing is the ultimate choice and superior to double glazing as it improves energy efficiency, comfort and noise reduction. Here's a clear breakdown:



1. Better insulation (U-value)

Triple glazing has three panes of glass and two insulating air/gas layers, while double glazing has only two panes and one layer. This means triple glazing:

- Keeps heat inside during winter
- Keeps heat out during summer
- Reduces heating/cooling costs

2. Less heat loss near windows

Triple glazing reduces the “cold surface” effect.

Benefits:

- Fewer cold drafts near windows
- More consistent room temperature
- Windows feel warmer to the touch

3. Better noise reduction

The extra glass layer + extra cavity gives:

- Lower outside noise
- Better performance for busy roads or cities

4. Less condensation

Inside surface is warmer, so:

- Less moisture forms on glass
- Reduced risk of mould or damp



CROWN PAVILIONS

Smokeless BBQ Collection

A refined, smoke-free way to cook and entertain, designed to sit seamlessly within our pavilions. Available as an option across all garden rooms, the Smokeless BBQ features an integrated extraction system that reduces smoke at source, creating a clean and comfortable space for cooking and dining together, whatever the season.

Designed to integrate effortlessly within your pavilion, with built-in grease management for a cleaner cooking experience and comfortable year-round use.



Single Grill

Dimensions:
Oval (1300 x 1600 mm)
Rectangular (1448 x 868 mm)

A more compact option, suited to everyday use.



Double Grill

Dimensions:
Rectangular (2300 x 1000 mm)
Oval (1600 x 2000 mm)

A larger format, ideal for hosting and entertaining.

Smokeless BBQ is available as an option on all garden rooms. Contact our team for full specifications.

Next steps?

If something in this brochure has caught your eye, or you simply need more information, then the next steps of bringing your ideas to life are simple:



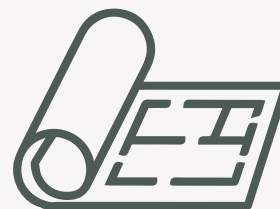
Step 1

Contact us by email, phone or visit our showrooms
-Email: sales@crownpavilions.com
-Call: 01491-612-820
-Visit crownpavilions.com to find a show site near you



Step 2

We will discuss your requirements and answer any questions. Next, we will either book an initial free site visit at your convenience or arrange for you to visit our showrooms.



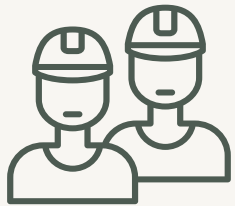
Step 3

Once you have decided on your building size and customisations we will provide you with a full quotation.



Step 4

Our customer service team will contact you to confirm your order and choice of customisations. We will then work with your diary to book in specific install dates.



Step 5

On the agreed date our team will arrive to start construction. Your garden room will take 7-21 days to complete in most cases.



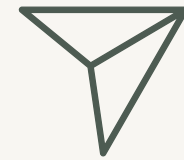
Step 6

Once our team has completed the work, we will show you how everything works and how to look after your garden room before asking for your signature to confirm you are happy with the result.



Step 7

Sit back and enjoy your new garden room.



Share with us

Send photo of your garden room at marketing@crownpavilions.com we'd love your feedback.



CROWN PAVILIONS

Our Showrooms

Alton Garden Centre (Essex)

Arterial Road (A127), Wickford, Essex SS12 9JG

Van Hage Garden Centre (Hertfordshire)

Pepper Hill, Great Amwell, Hertfordshire SG12 9RP

**Chessington Garden Centre
(Kingston Upon Thames)**

Leatherhead Rd, Chessington KT9 2NG

Frosts Garden Centre (Buckinghamshire)

Newport Rd, Woburn Sands, Milton Keynes MK17 8UE

Longacres Garden Centre (Surrey)

London Road, Bagshot, Surrey GU19 5JB

Bridgemere Garden Centre

Bridgemere, Nantwich, Cheshire, CW5 7SN

Call : 01491-612-820

sales@crownpavilions.com

www.crownpavilions.com

The marque of excellence