



CROWN PAVILIONS

Contemporary Collection

The World's Finest
Garden Rooms™

The marque of excellence

Welcome

...to the modern world, where houses are getting smaller and space is at a premium. We recognise that, wherever you live, many of you are looking for ways to create extra space, without the upheaval of moving or renovating your existing property. Enter a new generation of garden rooms – the home office, yoga studio or man cave – a one-stop solution, that provides you with extra space, permanently. These collections comprise of high quality, contemporary structures, that have all been thoughtfully designed to become a natural extension of your home and garden space.

Time to make your dream a reality?

Why Crown?

When you commission a garden room from Crown Pavilions, you will be taking on ownership of a timber structure that's been hand-built, in England, a building which over-delivers on quality and workmanship both inside and out.

The Contemporary Collection is fully insulated and triple glazed, with pre-installed internal electrics, just like a bricks-and-mortar extension. Yet, unlike a traditional extension, there is minimal disruption and planning permission is not usually required.

When it comes to creating the world's finest garden rooms, Crown Pavilions is the undisputed market leader. The Crown Marque of Excellence also ensures that your new garden room will remain the admired focal point of your garden for many years to come, a fabulous space that will impress your guests as you welcome them into your new 'bigger' home.

Marque of Excellence



Crown garden rooms are acknowledged across the globe as the world's finest outdoor living spaces, hand-built in Oxfordshire by award-winning craftsmen.

Delivery* & Installation



Installation is included in the price. Delivery is free within 100 miles of our Oxfordshire workshops.

Guaranteed up to 10 Years



For your complete peace of mind, Crown garden rooms are fully guaranteed against timber decay or compromise of structural integrity.

Premium Features



Fully insulated, fire retardant roof using 80mm insulation. Walls are also fully insulated using 70mm premium insulation for long lasting temperature control.

Electricity



Electricity can be quoted for and taken care of for a seamless project from start to finish.

Year Round Use



All of our garden rooms are fully insulated and built to exacting standards, designed to be used all year round, regardless of the weather.

Planning Permission



Planning permission is not normally required as this range is designed to fall within permitted development. Your new garden room will be built on site, usually taking from 3 to 6 days (+ 1 day for ground screw foundation)

Bringing your home and garden together

The NEW Contemporary Collection will enhance any outdoor space. With best-in-class features and our 20-years of garden room building pedigree, this collection has it all. Featuring striking modern cladding finishes, with coordinated window and door specifications throughout, along with your preferred flooring finish.

Peace-of-mind also comes as standard, with our 10-year structural guarantee and over 300 five-star Trust Pilot reviews.

What's included as standard?

- External cladding finishes include Weathered Grey, Walnut, and Charred Black.
- Aluminium windows and doors (triple glazed) in anthracite grey with brushed stainless steel hardware
- Double skinned roof with steel and fully insulated (80mm) sandwich panels (fire retardant Kingspan QuadCore KS1000RW)
- Double skinned walls, fully insulated with 70mm membrane backed rockwool
- Walls are all made from 3" x 2" solid timber studs. With wall finishes this provides 5.2" (134mm) insulated walls
- Fully insulated floor with 90mm Celotex for year-round warmth and comfort
- Premium grade internal laminated flooring available in Natural Oak, Walnut and Grey Oak
- Solid melamine walls (white) used for longevity and easy cleaning
- Installation included within 100 miles of our Oxfordshire workshops. (Additional charges apply for London area installations to cover parking and congestion costs)

Main Garden Room (Electrics)

- 1 x consumer unit 1x63a RCD (1x6a 1x16a)
- Sockets and switches (white)
- Track lighting (3 x 50w GU10 non dimmable)

Please note: all electrics are terminated in an internal consumer unit, ready for mains connection which is not included.

Doors and windows are supplied in anthracite grey aluminium, triple glazed with brushed stainless steel hardware.

Contemporary Collection (4m x3m)

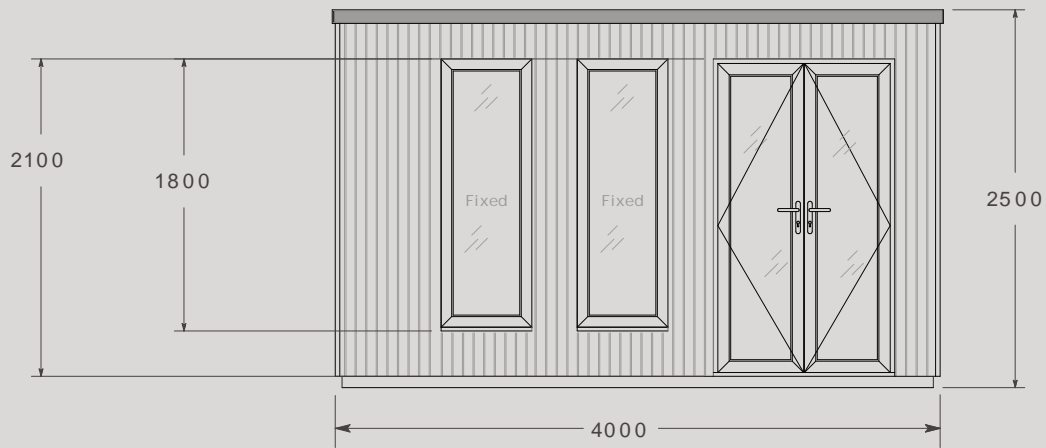
£22,950

Shown finished in anthracite grey aluminium, triple glazed with brushed stainless steel hardware.

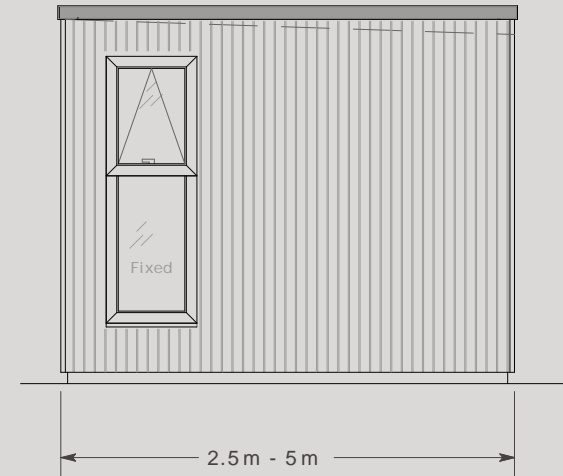


CROWN PAVILIONS

The dimensions: (4m x 3m)



Front Elevation

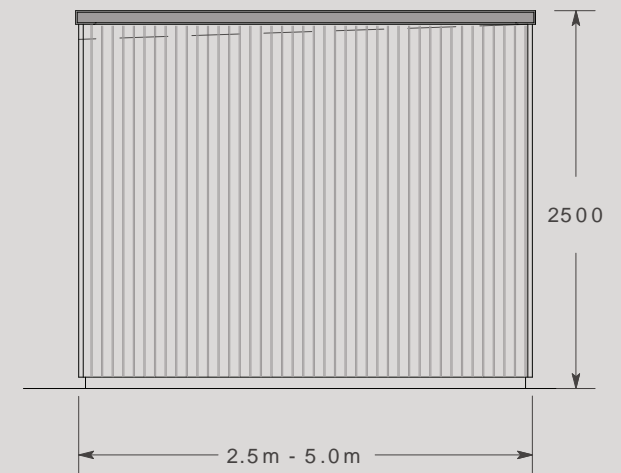


Right Elevation



4m x 3m

External cladding finishes include Weathered Grey, Walnut, and Charred Black.



Left Elevation

Contemporary Collection (5m x 4m)

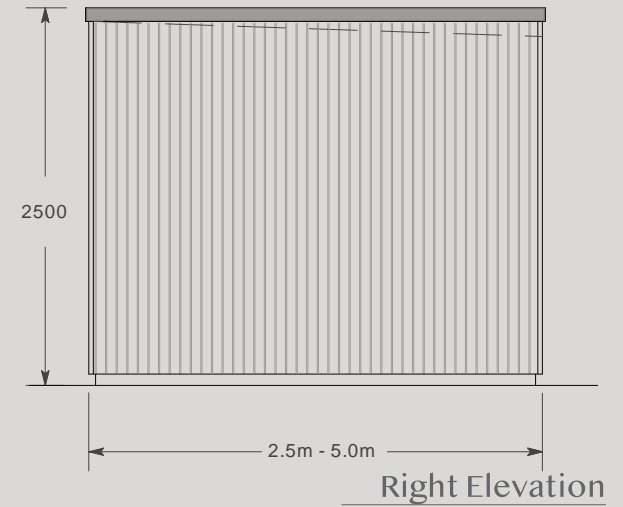
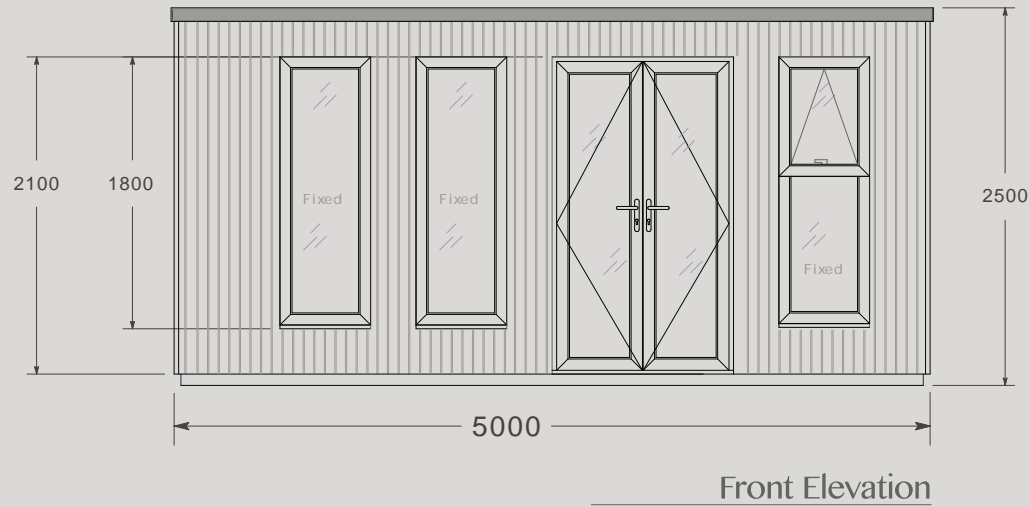
£27,360

Shown finished in anthracite grey aluminium, triple glazed with brushed stainless steel hardware.



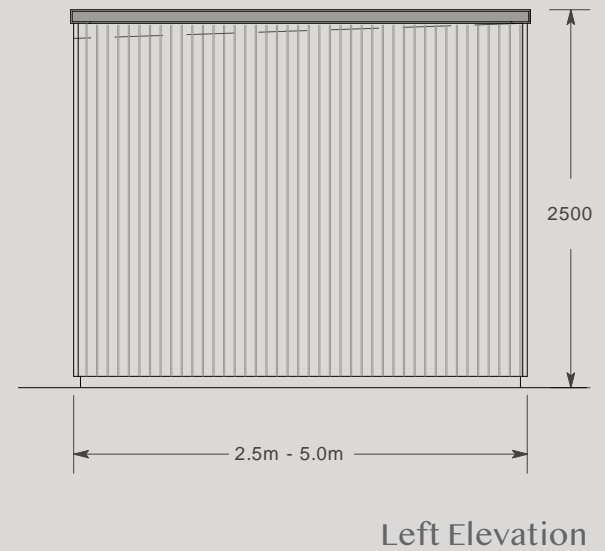
CROWN PAVILIONS

The dimensions: (5m x 4m)



5m x 4m

External cladding finishes include Weathered Grey, Walnut, and Charred Black. Corner window is included as standard.



Contemporary Collection (6m x 5m)



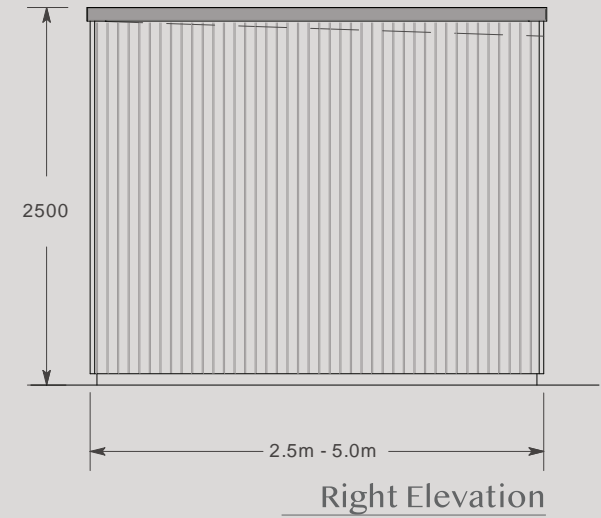
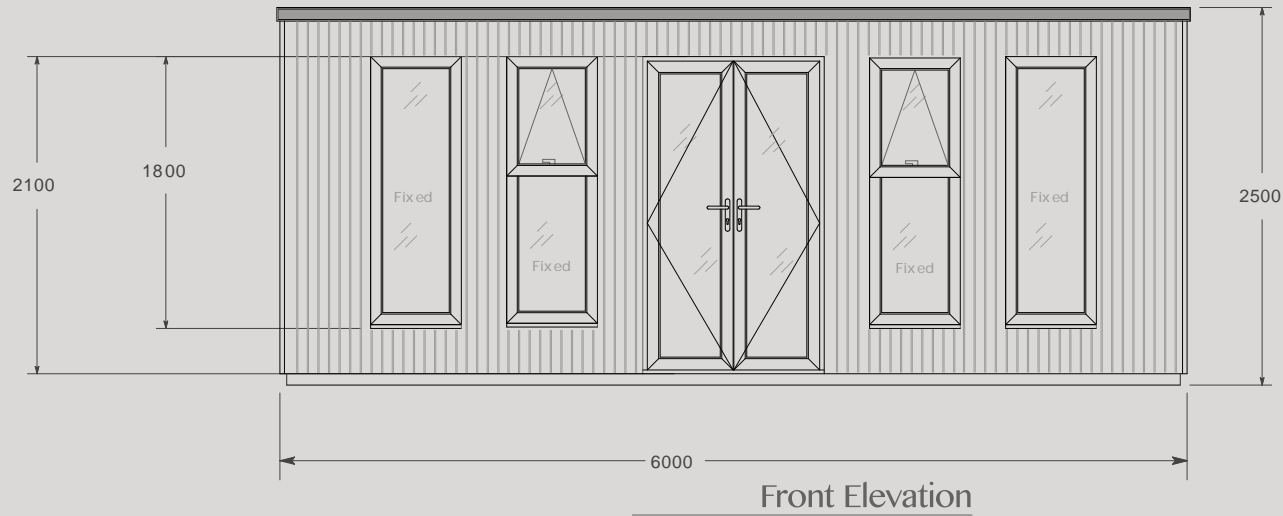
£37,970

Shown finished in anthracite grey aluminium, triple glazed with brushed stainless steel hardware.



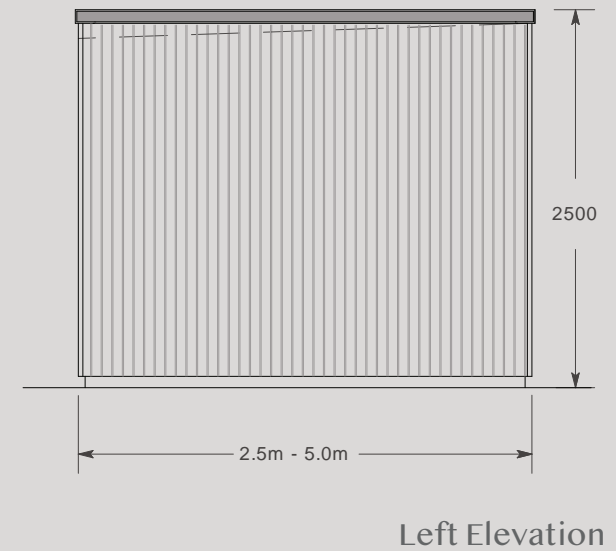
CROWN PAVILIONS

The dimensions: (6m x 5m)



6m x 5m

External cladding finishes include Weathered Grey, Walnut, and Charred Black.
Corner window is included as standard.



Contemporary Collection (10m x 3m)



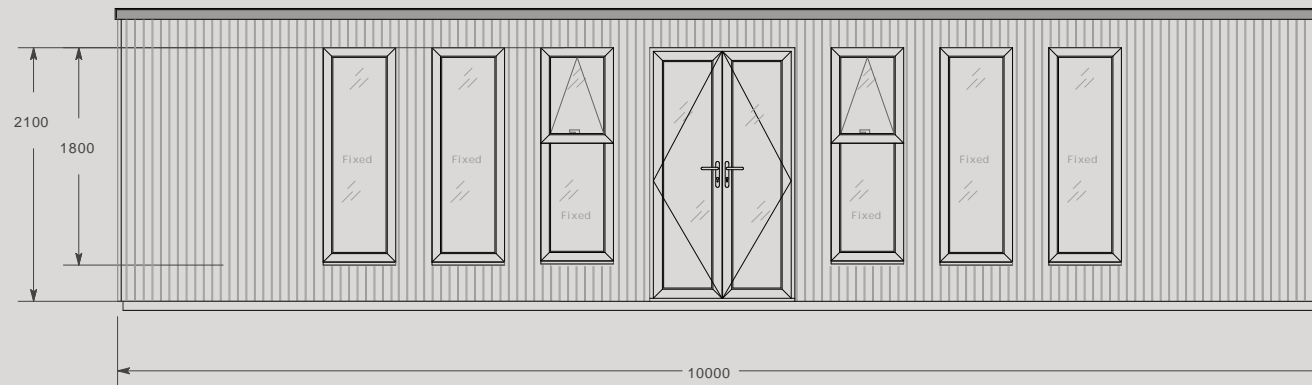
£40,340

Shown finished in anthracite grey aluminium, triple glazed with brushed stainless steel hardware.

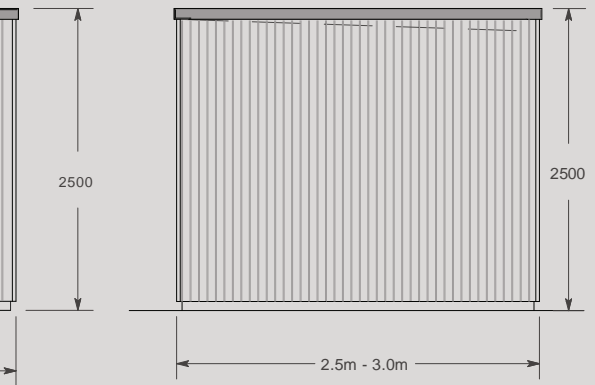


CROWN PAVILIONS

The dimensions (10m x 3m)



Front Elevation

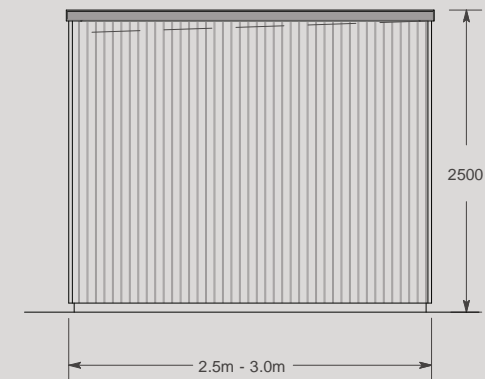


Right Elevation



10m x 3m

External cladding finishes include Weathered Grey, Walnut, and Charred Black.
Corner window is included as standard.



Left Elevation

Contemporary Garden Room Pricing

Sizing Options

		WIDTH (M)															
		2.5	3	3.5	4	4.5	5	5.5	6	6.5	7	7.5	8	8.5	9	9.5	10
DEPTH (M)	2.5	N/A	£ 17,490	£ 18,510	£ 19,230	£ 20,270	£ 20,990	£ 22,010	£ 23,050	£ 24,080	£ 25,120	£ 26,770	£ 28,320	£ 29,360	£ 30,080	£ 31,110	£ 32,140
	3	£ 17,490	£ 21,940	£ 22,950	£ 24,170	£ 25,180	£ 26,180	£ 27,510	£ 28,510	£ 30,150	£ 31,370	£ 33,320	£ 35,470	£ 36,490	£ 37,490	£ 38,710	£ 40,340
	3.5	£ 18,510	£ 22,640	£ 23,940	£ 24,920	£ 26,110	£ 27,730	£ 29,030	£ 30,220	£ 32,140	£ 33,970	£ 35,790	£ 37,610	£ 39,530	N/A	N/A	N/A
	4	£ 19,230	£ 23,640	£ 24,600	£ 25,880	£ 27,360	£ 28,950	£ 30,440	£ 31,710	£ 34,140	£ 36,460	£ 38,880	N/A	N/A	N/A	N/A	N/A
	4.5	£ 21,340	£ 25,960	£ 27,490	£ 29,140	£ 31,670	£ 34,420	£ 36,060	£ 37,600	£ 40,140	N/A	N/A	N/A	N/A	N/A	N/A	N/A
	5	£ 20,990	£ 25,970	£ 27,730	£ 29,470	£ 32,690	£ 36,220	£ 37,970	£ 39,720	N/A	N/A	N/A	N/A	N/A	N/A	N/A	N/A

Panel Heater

All garden rooms include 1 x electric panel heater (size of heater is dependent on the size of building chosen) Additional heaters can be purchased as specified below

	Size	Heated Space	Price
400w	370 x 486 x 84	6m ²	£280
600w	370 x 589 x 84	7.5m ²	£290
800w	370 x 704 x 84	10m ²	£300
1000w	370 x 762 x 84	12.5m ²	£310
1200w	370 x 934 x 84	15m ²	£330
1400w	370 x 1049 x 84	17.5m ²	£350
2000w	370 x 1394 x 84	20m ²	£380

Finance offers available.
Please contact us
for further details.

Base for your garden room

We can undertake a ground survey to establish if ground screws are suitable for your chosen location. The survey is necessary and charged at **£460** as an additional cost.

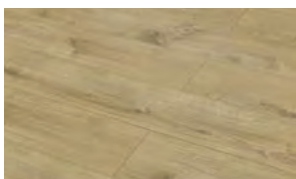
Heating

Electric wall panel heaters are available in white:

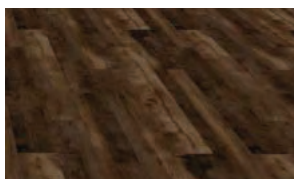
400w	size 370x486x84	Heated space for 6m ²
600w	size 370x589x84	Heated space 7.5m ²
800w	size 370x704x84	Heated space 10m ²
1000w	size 370x762x84	Heated space 12.5m ²
1200w	size 370x934x84	Heated space 15m ²
1400w	size 370x1049x84	Heated space 17.5m ²
2000w	size 370x1394x84	Heated space 20m ²

Flooring

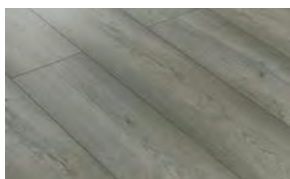
Natural Oak



Walnut



Grey Oak



Delivery & Installation

Professional installation of your Crown Pavilions garden room is included free of charge. Free delivery is also included within a 100 mile radius of our Oxfordshire workshops. For locations further afield a surcharge will apply for mileage and possible overnight accommodation for our installers depending on distance.

Please note there is also a surcharge for London area installations to cover parking and congestion charges.

Specification

All images in this brochure are indicative of models and design features at time of photography. Crown Pavilions products may vary due to ongoing design enhancements, improvements and modifications.

The plan dimensions shown in this brochure are not intended to be sufficient for fitting carpets, tiles, furniture etc. Please refer to your final order and drawings for the exact specification relating to your garden room.

Smart Air Conditioner

This wall-mounted all-in-one model is a great performer for year-round use as it works as a powerful air conditioner in the summer and a cost-effective heater in the winter. It functions as a dehumidifier too, which is great for keeping damp and moisture at bay.

10000 BTU

- 10000 BTU cooling and heating for large rooms up to 30 sqm (320 sqft)
- 3-in-1: Cool | Heat | Dehumidify
- All-in-one - No outdoor unit is required, this AC is neatly vented through the wall
- Slimline Design - Thinnest air conditioner on the market at just 20cm deep
- Smart - Control from your phone or home assistant. Smart scheduling saves energy
- Quietest all-in-one air conditioner - 58dB
- 24 hr timer to pre-cool rooms and turn off during the night. Scheduling saves money

12000 BTU

- 12000 BTU cooling and heating for large rooms up to 35 sqm (377 sqft)
- 3-in-1: Cool | Heat | Dehumidify
- All-in-one - No outdoor unit is required, this AC is neatly vented through the wall
- Slimline Design - Thinnest air conditioner on the market at just 20cm deep
- Smart - Control from your phone or home assistant. Smart scheduling saves energy
- Quietest all-in-one air conditioner - 61dB
- 24 hr timer to pre-cool rooms and turn off during the night. Scheduling saves money



Great for areas up to 35m



Cooling & Heating



Alexa and Google Home enabled



24 hour timer



Triple Glazing

Triple glazing is the ultimate choice and superior to double glazing as it improves energy efficiency, comfort and noise reduction. Here's a clear breakdown:



1. Better insulation (U-value)

Triple glazing has three panes of glass and two insulating air/gas layers, while double glazing has only two panes and one layer. This means triple glazing:

- Keeps heat inside during winter
- Keeps heat out during summer
- Reduces heating/cooling costs

2. Less heat loss near windows

Triple glazing reduces the “cold surface” effect.

Benefits:

- Fewer cold drafts near windows
- More consistent room temperature
- Windows feel warmer to the touch

3. Better noise reduction

The extra glass layer + extra cavity gives:

- Lower outside noise
- Better performance for busy roads or cities

4. Less condensation

Inside surface is warmer, so:

- Less moisture forms on glass
- Reduced risk of mould or damp

Next steps?

If something in this brochure has caught your eye, or you simply need more information, then the next steps of bringing your ideas to life are simple:



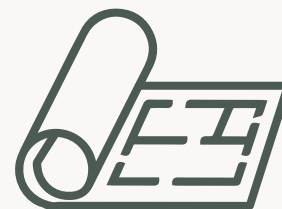
Step 1

Contact us by email, phone or visit our showrooms
-Email: sales@crownpavilions.com
-Call: 01491-612-820
-Visit crownpavilions.com to find a show site near you



Step 2

We will discuss your requirements and answer any questions. Next, we will either book an initial free site survey at your convenience or arrange for you to visit our showrooms.



Step 3

Once you have decided on your building size and customisations we will provide you with a full quotation.



Step 4

Our customer service team will contact you to confirm your order and choice of customisations. We will then work with your diary to book in specific install dates.



Step 5

On the agreed date our team will arrive to start construction. Your garden room will take 7-21 days to complete in most cases.



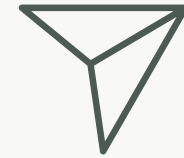
Step 6

Once our team has completed the work, we will show you how everything works and how to look after your garden room before asking for your signature to confirm you are happy with the result.



Step 7

Sit back and enjoy your new garden room.



Share with us

Send photo of your garden room at marketing@crownpavilions.com we'd love your feedback.



CROWN PAVILIONS

Our Showrooms

Alton Garden Centre (Essex)

Arterial Road (A127), Wickford, Essex SS12 9JG

Van Hage Garden Centre (Hertfordshire)

Pepper Hill, Great Amwell, Hertfordshire SG12 9RP

**Chessington Garden Centre
(Kingston Upon Thames)**

Leatherhead Rd, Chessington KT9 2NG

Frosts Garden Centre (Buckinghamshire)

Newport Rd, Woburn Sands, Milton Keynes MK17 8UE

Longacres Garden Centre (Surrey)

London Road, Bagshot, Surrey GU19 5JB

Bridgemere Garden Centre

Nantwich, CW5 7SN

Call : 01491-612-820

sales@crownpavilions.com

www.crownpavilions.com

The marque of excellence